

Professional Video Streaming and Recording Appliance



Matrox® Monarch™ HD Professional Video Streaming and Recording Appliance.

Matrox Monarch HD is a small, easy-to-use video streaming and recording appliance designed for professional video producers to stream a live event while simultaneously recording a higher, master quality version for post-event editing or archiving. Webcasting to YouTube and Facebook Live is made easy through its simplified set up for these popular platforms. All that's needed is to pair the device once with these accounts and it's automatically retained for subsequent streams.

From any HDMI input source such as a camera or switcher, Matrox Monarch HD generates an H.264-encoded stream compliant with RTSP or RTMP protocols. While encoding the video at bitrates suitable for live streaming, Matrox Monarch HD simultaneously records a high-quality MP4 or MOV file to an SD card, a USB drive, or a network-mapped drive. Matrox Monarch HD is remotely controlled using any computer or mobile device with a web browser.

Easily webcast to your audience

Monarch HD can provide live content to CDNs such as YouTube, Facebook Live, and Ustream; media servers such as Adobe Flash and Wowza; or directly to a computer or device found on a LAN. The device is easily configured and paired for YouTube and Facebook accounts with a few short steps. As a certified “Works with Wowza” encoder it allows users to benefit from enhanced integration with the Wowza™ streaming engine. Additionally, Monarch HD supports XML files generated for use with Flash Live Media Encoder.



Record master quality video while streaming

If an event is worth streaming, it is worth recording at the highest possible quality. The better the recording quality, the more value it offers a post event produced asset. These assets can be made available to your audience as fast turnaround VOD files or as fully post produced highlight reels.

Matrox Monarch HD supports sharing the H.264 encoder between the streaming and recording processes so recording quality and upload bandwidth are independent of each other. A typical setting will let a user record a master quality file at 25 Mbps while simultaneously streaming at a bitrate of 5 Mbps. As a dedicated streaming or recording appliance, Matrox Monarch HD can stream at bitrates up to 20 Mbps or record at bitrates as high as 30 Mbps.

Matrox Monarch HD injects the highest quality video into every bit regardless of input source or target bitrate. Combining the power of the built-in H.264 encoder with Matrox’s high quality de-interlacing and scaling engines guarantees stunning results.



Ready to edit and upload with MP4 and MOV

Matrox Monarch HD gives the option of recording high quality H.264 video as MP4 or MOV files. These formats offer maximum versatility for use in any application. Upload a file to your own web server or to a Content Delivery Network (CDN) like YouTube. Alternatively, you can directly import the file into most creation tools without the need for file transcoding.



Robust and practical design

Powerful and robust, Matrox Monarch HD offers simple, one touch stream and record pushbuttons, low power consumption, a locking power connector, and a fanless design. Matrox Monarch HD’s HDMI output makes it easy to monitor what you are streaming and recording, regardless of whether the signal received from a camera, a switcher, a signal converter, or a computer. All eight channels of embedded audio can be passed from the HDMI input to HDMI output ports. Two channels of analog audio input with loopOut are also available via 1/8” stereo jacks. Its design allows Matrox Monarch HD to be just as easily located on a desktop as in a rack—up to three units can fit in a single 1RU tray. The storage and button controls are conveniently located on the front of the unit while the power and I/O ports are found at the back.



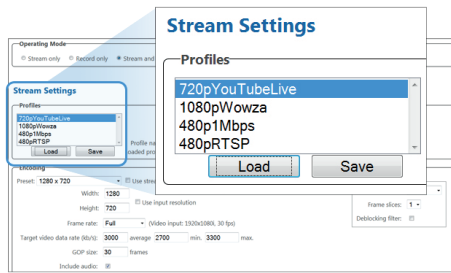
Record to anything

Matrox Monarch HD lets you select from a variety of recording media types. Use an SD card when a compact portable solution is required or a USB drive for long form recording. Alternately, a system drive on a computer found on the network may prove extremely useful if multiple individuals need to access the footage.

The Monarch HD provides users the ability to create split files while recording. This is particularly useful when recording for extended periods of time. The user can enter a file length and Monarch HD will automatically split your recording into separate files, switching to a new file without losing a single frame. When loaded on an NLE timeline sequentially, they will playback seamlessly and can be exported as a single contiguous file.

Regardless of how or where you store the footage, the record controls can be executed without affecting the streaming operations. High quality files will be available to create video assets to complement the live stream well after the event is completed.





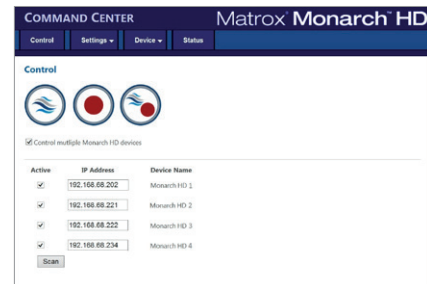
Presets and profiles for simple configuration

The Monarch HD firmware ships with a number of typical streaming and recording presets that define all the encoding parameters including resolution and bitrate. Whether preset or custom parameters are used, they only need to be entered once and saved as a unique profile. A profile not only contains encoding parameters but also destination information detailing where the encoded video is being sent. Multiple profiles can be saved if the device is used in different environments. Recording and streaming profiles are saved independently allowing a user to mix and match profiles depending how the Monarch is being used at the time. Each profile can be loaded instantly without having to re-enter data.

Remote command and control

A simple web page is all that is needed to harness the power of Matrox Monarch HD. You can control and configure the appliance using any device on your network that supports a standard web browsing application.

A single Matrox Monarch HD device can act as a master to multiple slave devices. From a single web page, you can simultaneously start the recording and/or streaming of up to four Matrox Monarch HD devices.



Integrate Matrox Monarch HD into your own application or environment



Network- or cloud-based video management platform developers, A/V integrators and value-added resellers can use Monarch HD Dev Tools, which include automatic configuration tools and the Monarch HD Control API, to provide a unified, consistent and branded user experience. Individual users need not interact with the Monarch HD Command Center web UI, which can simplify enterprise-level and centrally administered deployments.

Automatic configuration tools can be used to set all Monarch HD encoding and destination settings by simply loading a properly formatted configuration file. For example, specialized CDNs and video platform providers who wish to offer a branded plug-and-play user experience can use the automatic configuration tools to give their customers a very simple installation procedure. The customer would just insert a USB key containing the customized automatic configuration file, boot the new Monarch HD and be ready to stream at exactly the right settings. Similarly, IT administrators in corporate and education environments with deployments of multiple Monarch HD units on a network can use the tools to manage all of the units from a single application or portal. This can be done automatically by having each Monarch HD check a defined webpage for configuration settings at boot up. Alternatively, the task of fetching configuration settings can be triggered manually from the Monarch HD Command Center.

Monarch HD Control API is an HTTP-based API that lets system integrators create their own control software to start, stop, set streaming bitrate and destination, and get the status of a Monarch HD device. The Monarch HD Command Center or the automatic configuration tools are used to initially configure devices with complete streaming and recording parameters. Once set up, units can be controlled using the custom application, on-device buttons only or the Command Center.

Integrate with Crestron

The Monarch HD Control API is an ideal way to integrate Monarch HD functionality into an existing classroom, boardroom or other space equipped with a Crestron control system. Monarch HD registered users are invited to download a sample SIMPL module written to run on Crestron 2-Series® and 3-Series® Room Media Controllers.



Install in rack

Matrox offers an optional Monarch HD Rack Mount Kit, an ideal space and cable management accessory which allows a user to fit up to three Monarch HD units in a single 1RU space.



Matrox Monarch HD connections



Front view

Back view

- | | |
|--------------------------|---|
| 1. Power LED | 9. HDMI Output Connector
(with embedded audio) |
| 2. Warning LED | 10. HDMI Input Connector
(with embedded audio) |
| 3. Stream Button | 11. Analog Audio Output (stereo) |
| 4. Record Button | 12. Analog Audio Input (stereo) |
| 5. USB 2.0 Ports | 13. Reset Button |
| 6. SD Card Slot | |
| 7. Power Connector | |
| 8. Gigabit Ethernet Port | |

Contact Matrox

North America Corporate Headquarters

Tel: (514) 822-6364, (800) 361-4903 (North America) • Fax: (514) 685-2853
E-mail: video.info@matrox.com

Europe, Middle East & Africa

Tel: +44 (0) 1895 827220 • Fax: +44 (0) 1895 827239
E-mail: video.info.emea@matrox.com

Matrox is a market leader in the 4K and HD digital video hardware and software fields, offering accelerated H.264 encoding, streaming, AV signal conversion, capture/playout servers, and CGs. Matrox's Emmy award-winning technology powers a range of multi-screen content creation and delivery platforms used by broadcasters, telcos, cable operators, post-production facilities, live event producers, videographers, and AV professionals worldwide. Founded in 1976, Matrox is a privately held company headquartered in Montreal, Canada. For more information, visit www.matrox.com/video.

© 2019 Matrox Graphics, Inc. All rights reserved. Matrox reserves the right to change specifications without notice. Matrox and Matrox product names are registered trademarks in Canada or other countries and/or trademarks of Matrox Electronic Systems, Ltd and/or Matrox Graphics Inc. All other company and product names are registered trademarks and/or trademarks of their respective owners. 03/2019

The Matrox logo, consisting of the word "matrox" in a bold, blue, sans-serif font, with a registered trademark symbol (®) to the upper right of the "x".